

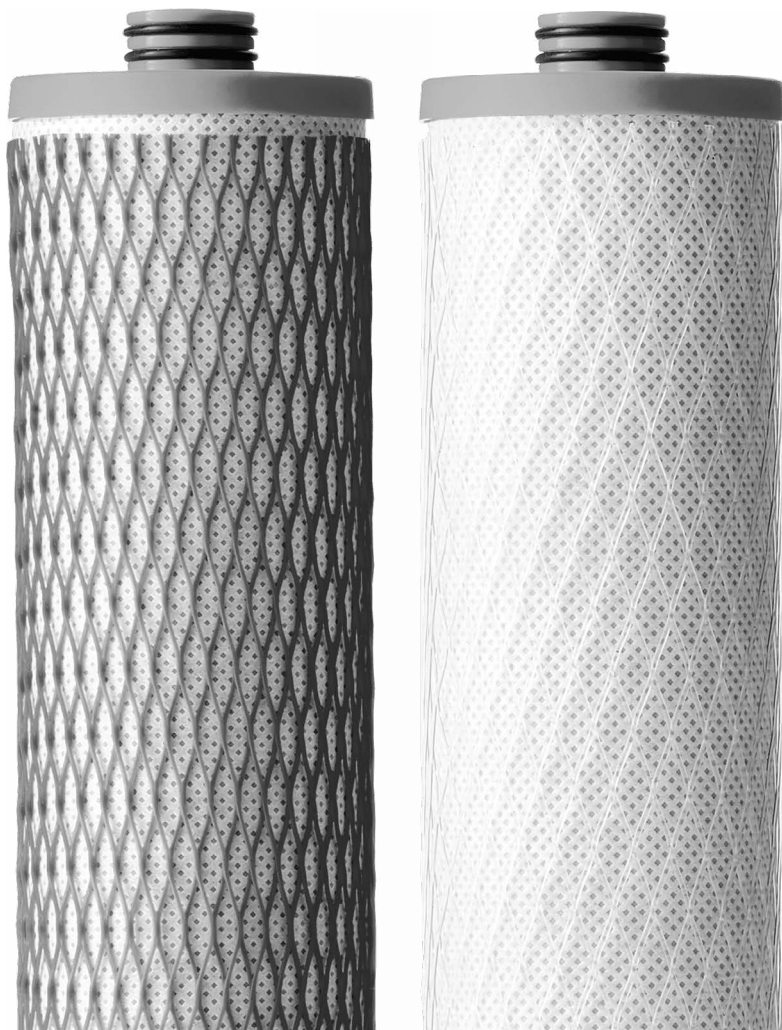
AO-4000-CARBON



Replacement Manual

CARBON & CLARYUM® FILTERS

FOR USE WITH AO-US-RO-4000



IF YOU NEED HELP OR HAVE A QUESTION, WE'VE GOT YOU COVERED. GIVE US A CALL AT 877.333.7108

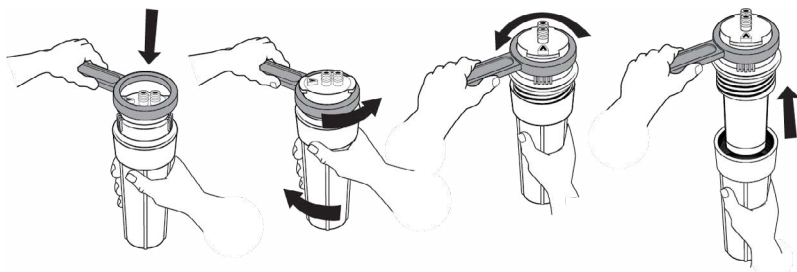
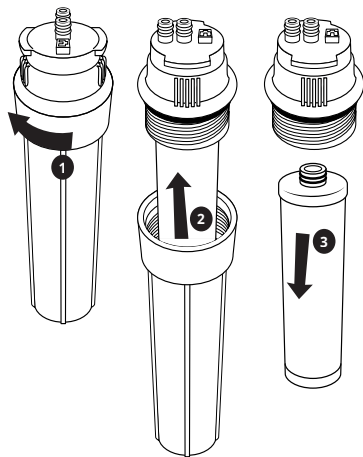
STEP 1 Prepare for Installation

1. Turn off COLD water valve. Release pressure from system by turning on dedicated faucet until water stops flowing.
2. Unbox filter cartridge replacements and remove plastic.

STEP 2 Remove Filter Cartridges

1. Remove Stage 1 and Stage 3 sumps from the system manifold by rotating the sumps to the left and pulling down.
2. Holding the sumps over the sink, unscrew the top of the sump from the bottom by turning the bottom portion to the left. Pour excess water down the drain. Then, pull down on each filter cartridge to disconnect the filter cartridge from the top half of the sump.
3. Discard both filter cartridges.

Note: If sumps are too tight to disconnect by hand, please use plastic wrench provided with original system.

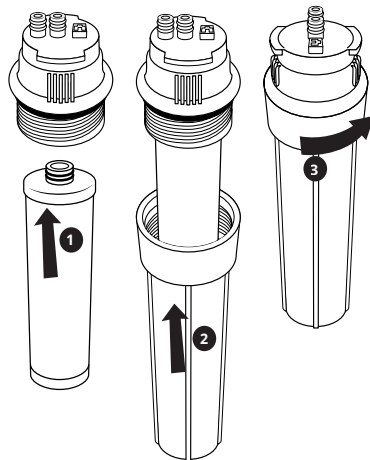


STEP 3 Attach Cartridges

1. Press new filter with clear netting to the top of Stage 1 sump. Reattach the bottom of the sump by ensuring connection points are correctly aligned, then turn to the right to tighten.
2. Continue this step for Stage 3 using the new filter with the blue netting.

Note: Do not use tools to tighten. Hand tighten only.

3. Set aside Stage 1 and Stage 3 sumps and follow steps 4-5 to change the Remineralizer. To prevent water from flowing, do not reattach Stage 1 and 3 at this time.



STEP 4 Reattach Sumps

1. Reattach sumps to the system manifold with Stage 1 on the left and Stage 3 on the right to the top housing. Ensure all connection points are aligned. Push the top of the sump into the bottom of the top housing and turn the sump to the right. Ensure the sump is fully attached and locked into Stage 1 on the left and Stage 3 on the right.

Note: Ensure sumps are not on an angle while reattaching. This may result in damage to the o-ring.

STEP 5 Flush and Check for Leaks

1. Slowly turn on the cold water valve. Confirm the dedicated faucet is off and allow water tank to refill completely.

Note: It will take 2 hours for the water tank to refill.

2. Once the tank has completely filled, inspect for leaks. If there are no leaks, flush the filter cartridges by turning on the dedicated faucet and allowing the water to run through the system until there is no pressure coming out of the dedicated faucet.

Note: Do not drink flushed water.

3. Turn off the dedicated faucet and allow 2 hour for the pressure to build in the system. Once complete, your system is ready for use.

Care

To clean system manifold, wipe exterior with a damp cloth. Do not use any strong abrasive cleaning agent or solvent cleaner.

NOTICE

Safeguards

- If you experience a hose connection leak, disconnect and re-set the hose.
- Do not use with water that is microbiologically unsafe or of unknown water quality without adequate disinfection before or after the system.
- Systems certified for cyst reduction may be used on disinfected waters that may contain filterable cysts.



Scan to view the AO-US-RO-4000 replacement video.



System certified by IAPMO R&T against NSF/ANSI Standards 42, 53, 401 for reduction of claims specified on Performance Data Sheet and at www.IAPMO.com.

- Rated capacity: 365 gallons (1,382 liters)

For the full list of contaminants filtered, scan to view the AO-US-RO-4000 Performance Data Sheet.



A. O. Smith Corporation
11270 W Park Pl #170, Milwaukee, WI 53224
877.333.7108