

**Replacement**

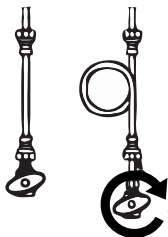
**CLARYUM®**

FOR USE WITH AO-FF/AO-CWM

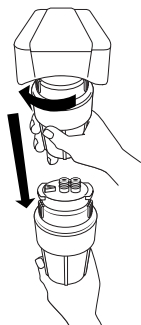


**Replacement Manual**

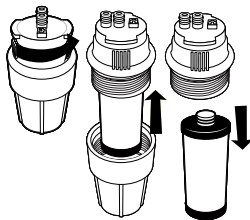
**1** Turn off the water supply to your refrigerator or freezer filter. Release pressure from the system by activating the water dispenser in your refrigerator. Once there is no water coming from the water dispenser, you can change the filter.



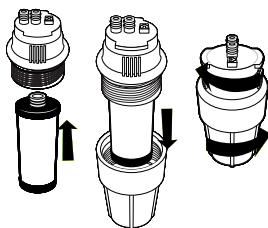
**2** Remove the plastic from the filter replacement. Remove the filter housing from the system manifold by rotating it to the left and pulling down. Ensure the filter housings are not on an angle while removing. This may result in damage to the o-ring.



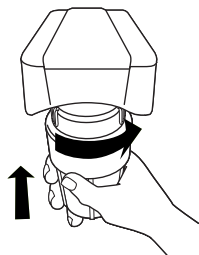
**3** Hold the filter housing over the sink. Separate the two pieces by turning the bottom portion to the left. Pour excess water down the drain. Pull down on the filter housing to disconnect it from the top half. While the housing is open, inspect the o-ring for damage. If damaged, replace immediately. If misaligned, gently move the o-ring into place.



**4** Insert and connect the new filter replacement to the top half of the sump. Reattach the bottom of the filter housing to the top half by turning to the right and tightening.



**5** Reattach the filter housing to the bottom of the top housing by making sure all connection points are aligned. Push the top of the filter housing up into the bottom of the system manifold and turn to the right. Ensure that the filter housing is fully attached and locked in.



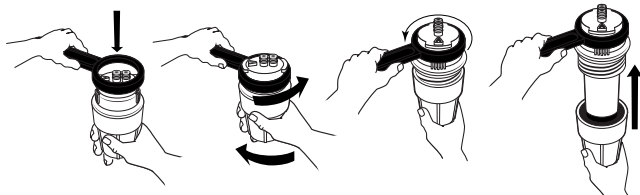
**NOTE:** Do not use tools to tighten. Hand tighten only.

**6** Once the filter replacement has been changed and the filter housing is securely attached to the system manifold, slowly turn on the water supply to your refrigerator or freezer filter. Inspect the system for leaks.

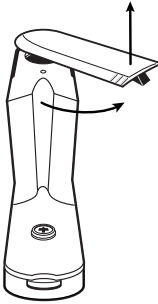
**7** Allow filtered water to run through for one minute or until water is free from discoloration before drinking.

**NOTE:** Do not drink flushed water.

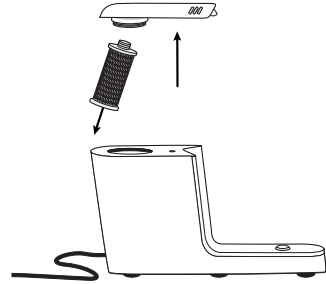
**NOTE:** If filter housing is too tight to disconnect by hand, please use the plastic wrench included with original system.



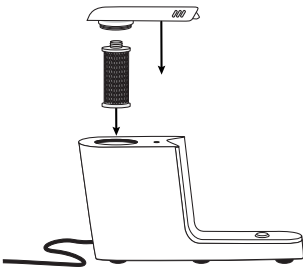
- 1** Remove dispenser from filtration dock. With filtration dock facing forward, open top cover by rotating it a quarter-turn to the right until the top cover lifts off the filtration dock.



- 2** Remove used filter from top cover by pulling down on the filter.

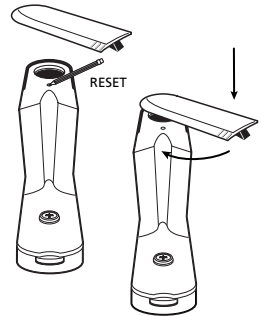


- 3** Drop the filter replacement into the opening on the dock with the o-rings facing up.

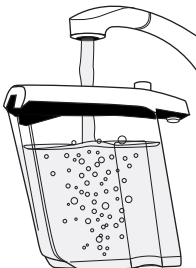


- 4** After dropping the filter replacement into the dock opening, push the reset button located on the top of the dock with a sharp pointed object. This will reset the filter status light on the system.

- 5** Place the top cover on the dock. Press firmly and rotate the top cover a quarter-turn to the left until fully locked in. Ensure both tabs on the top cover are aligned with the dock.

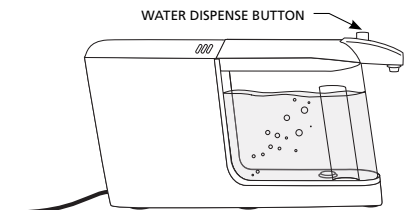


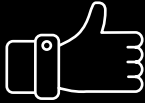
- 7** Once the filter has been replaced and the top cover is fully locked into filtration dock, fill dispenser with cold water and place back onto dock.



- 8** Hold dispenser button down until all water has filtered through the system.

**NOTE:** Do not drink flushed water.





**Love it?**  
We welcome your  
rating & review.

Visit  
[AOSmithatLowes.com/reviews](https://AOSmithatLowes.com/reviews)



**Need help?**  
We'll be happy to assist you in any way at  
**877.333.7108**

Please do not return to the store.



Tested and Certified by NSF International against NSF/ANSI Standards 42, 53, and 401 for the reduction of the claims specified on the Performance Data Sheet and at [www.NSF.org](http://www.NSF.org).



For the full list of contaminants filtered, scan to view the AO-FF Performance Data Sheet on [AOSmith.com](https://AOSmith.com).



The recommended replacement frequency for the AO-FF is every 200 gallons of use or every 6 months.

Use only certified, genuine A. O. Smith replacement filters for continued contaminant removal and system performance.



Tested and Certified by NSF International against NSF/ANSI Standards 42, 53, and 401 for the reduction of the claims specified on the Performance Data Sheet and at [www.NSF.org](http://www.NSF.org).



For the full list of contaminants filtered, scan to view the AO-CWM Performance Data Sheet on [AOSmith.com](https://AOSmith.com).



The recommended replacement frequency for the AO-CWM is every 320 gallons of use or every 6 months.

Use only certified, genuine A. O. Smith replacement filters for continued contaminant removal and system performance.



AO-US-100-R

**AC**Smith.

**Repuesto**

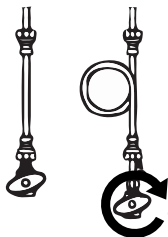
**CLARYUM®**

PARA USO CON AO-FF/AO-CWM

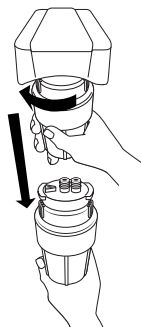


**Manual de reemplazo**

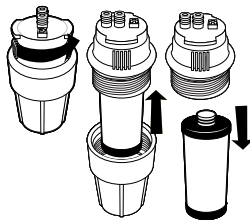
**1** Corte el suministro de agua hacia el filtro de su refrigerador o congelador. Active el dispensador de agua de su refrigerador para liberar la presión del sistema. Una vez que no salga agua del dispensador de agua, puede cambiar el filtro.



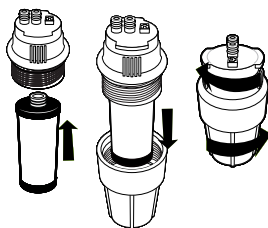
**2** Retire el plástico del filtro de repuesto. Para retirar la carcasa del filtro del colector del sistema, gire la carcasa del filtro hacia la izquierda y tire de él hacia abajo. Asegúrese de que las carcavas de los filtros no estén en ángulo mientras se sacan. Esto puede provocar daños en la junta tórica.



**3** Afirme la carcasa del filtro sobre el fregadero. Gire la parte inferior hacia la izquierda para separar las dos piezas. Vierta el exceso de agua por el drenaje. Tire de la carcasa del filtro hacia abajo para desconectarla de la mitad superior. Aunque la carcasa esté abierta, inspeccione la junta tórica para descartar daños. Si está dañada, reemplácela inmediatamente. Si está mal alineada, mueva cuidadosamente la junta tórica hasta que quede en su lugar.

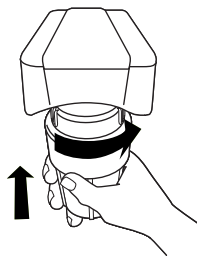


**4** Inserte y conecte el nuevo filtro de repuesto en la mitad superior del sumidero. Gire y apriete la parte inferior de la carcasa del filtro hacia la derecha para volver a conectarla con la mitad superior.



**NOTA:** No use herramientas para apretar las piezas. Solo apriete con la mano.

**5** Vuelva a instalar la carcasa del filtro en la parte inferior de la carcasa superior y asegúrese de que todos los puntos de conexión estén alineados. Empuje la parte superior de la carcasa del filtro hacia arriba y hacia la parte inferior del colector del sistema y gire hacia la derecha. Asegúrese de que la carcasa del filtro esté completamente instalada y bloqueada.

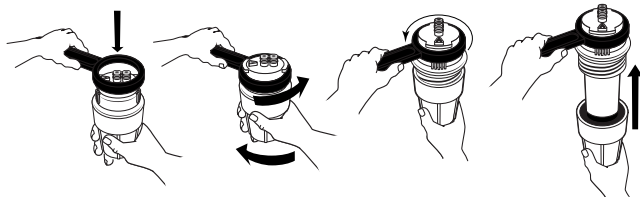


**6** Una vez que se haya cambiado el filtro de repuesto y se haya instalado firmemente la carcasa del filtro en el colector del sistema, abra lentamente el suministro de agua hacia el filtro del refrigerador o congelador. Inspeccione si el sistema tiene fugas.

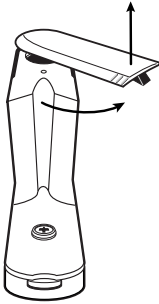
**7** Permita que el agua filtrada corra durante un minuto o hasta que el agua no tenga decoloración antes de consumirla.

**NOTA:** No beba el agua de lavado.

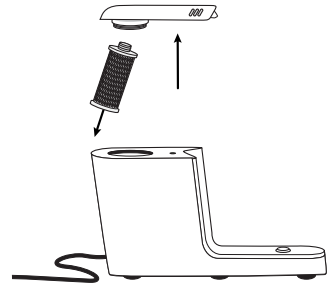
**NOTA:** Si la carcasa del filtro está demasiado apretada para desconectarla con la mano, use la llave ajustable de plástico que viene con el sistema original.



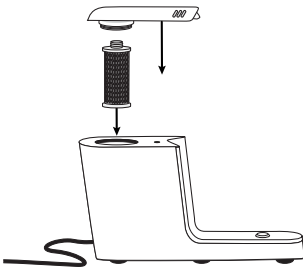
- 1** Retire el dispensador de la base de filtración. Con la base de filtración orientada hacia adelante, gire la cubierta superior un cuarto de vuelta hacia la derecha para abrirla, hasta que salga de la base de filtración.



- 2** Tire del filtro usado hacia abajo para sacarlo de la cubierta superior.



- 3** Deje caer el filtro de repuesto en la abertura de la base con las juntas tóricas orientadas hacia arriba.



- 4** Después de dejar caer el filtro de repuesto en la abertura de la base, presione el botón de restablecimiento ubicado en la parte superior de la base con un objeto de punta afilada. Esto restablecerá la luz de estado del filtro en el sistema.

- 5** Coloque la cubierta superior en la base. Presione firmemente y gire la cubierta superior un cuarto de vuelta hacia la izquierda hasta que esté completamente bloqueada. Asegúrese de que ambas lengüetas de la cubierta superior estén alineadas con la base.

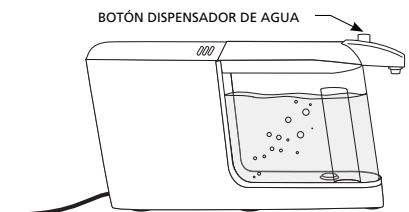


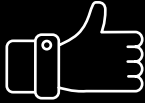
- 7** Una vez que se haya cambiado el filtro y la cubierta superior esté completamente bloqueada en la base de filtración, llene el dispensador con agua fría y colóquelo nuevamente en la base.



- 8** Mantenga presionado el botón del dispensador hasta que se haya filtrado toda el agua por el sistema.

**NOTA:** No beba el agua de lavado.





**Love it?**

**We welcome your  
rating & review.**

Visit

**AOSmithatLowe.com/reviews**



**Need help?**

We'll be happy to assist you in any way at  
**877.333.7108**

Please do not return to the store.



Tested and Certified by NSF International against NSF/ANSI Standards 42, 53, and 401 for the reduction of the claims specified on the Performance Data Sheet and at [www.NSF.org](http://www.NSF.org).



For the full list of contaminants filtered, scan to view the AO-FF Performance Data Sheet on [AOSmith.com](http://AOSmith.com).



The recommended replacement frequency for the AO-FF is every 200 gallons of use or every 6 months.

Use only certified, genuine A. O. Smith replacement filters for continued contaminant removal and system performance.



Tested and Certified by NSF International against NSF/ANSI Standards 42, 53, and 401 for the reduction of the claims specified on the Performance Data Sheet and at [www.NSF.org](http://www.NSF.org).



For the full list of contaminants filtered, scan to view the AO-CWM Performance Data Sheet on [AOSmith.com](http://AOSmith.com).



The recommended replacement frequency for the AO-CWM is every 320 gallons of use or every 6 months.

Use only certified, genuine A. O. Smith replacement filters for continued contaminant removal and system performance.

